

**RM-SC**

Platform: 56mm x 56mm  
 Rotation Range: 360°  
 Reading Accuracy: 1°  
 Load Capacity: 5kg (H), 2kg (R)  
 Aperture: Ø25.4mm



**RM-RC**

Platform: Ø68mm  
 Rotation Range: 360°  
 Reading Accuracy : 1°  
 Load Capacity: 10.0kg (H), 1.5kg (R)  
 Aperture: Ø50.8mm



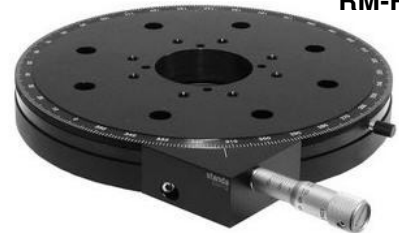
**RM-RF**

Platform: Ø68mm  
 Rotation Range: 360°  
 Reading Accuracy: 0.1°  
 Sensitivity: 0.01°  
 Load Capacity: 5kg (H), 2kg (R)  
 Aperture: Ø25.4mm



**RM-SF**

Platform: Ø68mm  
 Rotation Range: 360°  
 Reading Accuracy: 0.1°  
 Sensitivity: 0.01°  
 Load Capacity: 50kg (H), 15kg (V)  
 Aperture: Ø50.8mm



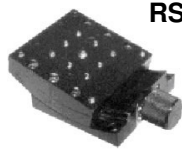
**RM-RB**

Platform: Ø200mm  
 Rotation Range: 360°  
 Reading Accuracy: 0.01°  
 Sensitivity: 0.002°  
 Load Capacity: 15kg (H)  
 Aperture: Ø50.8mm



**RS-RC**

Platform: Ø56mm, Ø75mm, Ø100mm  
 Rotation Range: 360°  
 Reading Accuracy: 2°  
 Load Capacity: 5kg (H), 0.5kg (V)



**RS-SCD1**

Platform: 60mm x 60mm  
 Rotation Range: ±15°  
 Reading Accuracy: 1°  
 Sensitivity: 0.005°  
 Load Capacity: 5kg



**RS-SCD2**

Platform: 60mm x 60mm  
 Load Capacity: 5kg

Top:  
 Rotation Range: ±15°  
 Reading Accuracy: 1°  
 Sensitivity: 0.005°

Bottom:  
 Rotation Range: ±10°  
 Reading Accuracy: 1°  
 Sensitivity: 0.003°

**Contact Information:**

**PHOTONIK (SINGAPORE) PTE LTD**

8 Boon Lay Way, TradeHub 21, #04-04, Singapore 609964  
 Tel: +65-6316-6370, +65-6316-2142 Fax: +65-6316-1082  
 Email: sales@photonik.com.sg Web: www.photonik.com.sg

**Local Representative:**

