

**0.5"→1" Mounting Adapter**



**RMS"→1" Thread Adapter 1" or 2" End Cap(Threaded)**



**PHOTONIK PRODCUT FOR PHOTONICS**

[www.photonik.com.sg](http://www.photonik.com.sg)  
[sales@photonik.com.sg](mailto:sales@photonik.com.sg)  
Tel: (65) 6562 7838

**1"→2" Mounting Adapter**



**0.5"→1" Thread Adapter**



**0.5", 1", 2" Retaining Ring**



Rubber O-Ring Gasket with Stress Free

**15mm→1" Mounting Adapter**



**"C"Mount →1" Thread Adapter**



**0.5"/15mm/1"/30mm/2" Slip Ring**



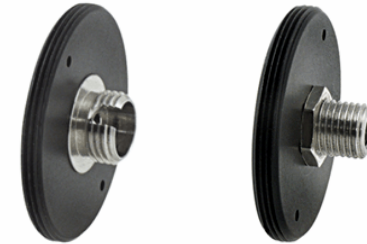
**1" Threaded Zoom Housing**  
**(1" Optics)**  
(4mm, 6mm, 10mm)



**1"/30mm Threaded Tube**  
(10mm, 20mm, 30mm, 60mm)



**1" Threaded Mounted Fiber Adaptor**  
(FC & SMA Connector Type)



**1" Threaded Tube Adapter**  
(30mm OD; All Internal Thread)



**1" Threaded Tube Adapter**  
(30mm OD; Ext-Int Thread)



**360° Fiber Rotator**  
(125/250um Groove)



**PHOTONIK PRODCUT FOR PHOTONICS**

[www.photonik.com.sg](http://www.photonik.com.sg)  
[sales@photonik.com.sg](mailto:sales@photonik.com.sg)  
Tel: (65) 6562 7838

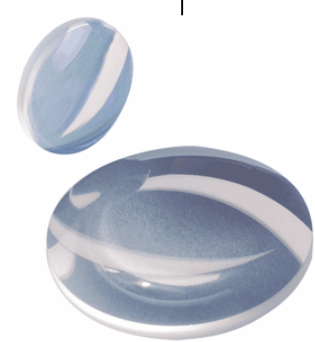
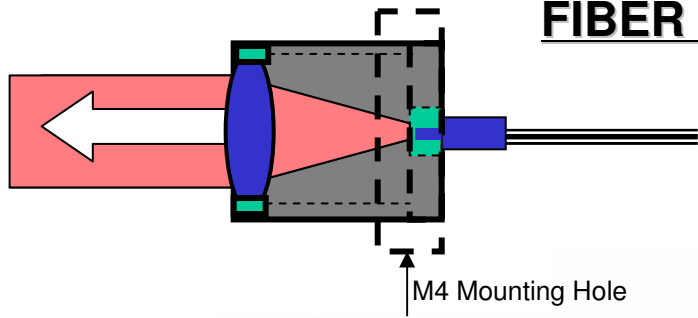
# FIBER COLLIMATOR/COUPLER SET

(FC or SMA Connector)



PHOTONIK PRODCUT FOR PHOTONICS

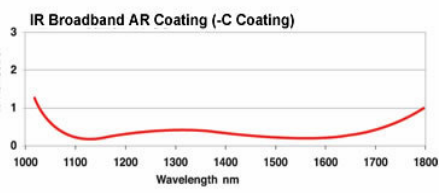
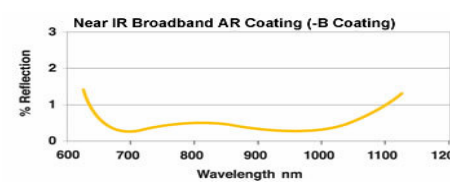
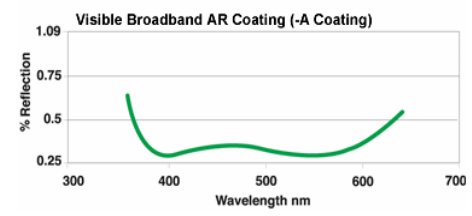
www.photonik.com.sg  
 sales@photonik.com.sg  
 Tel: (65) 6562 7838



FC Connector



SMA Connector



## Features:

- Fiber connectorized for FC or SMA(or others upon request)
- With zoom housing
- Easy to assembly and modular;
- Beam divergence tunable;
- Lockable
- User may change different/std lens for achieving different collimated beam size of expectation.